

President's Message

How Much Certification Should an Infrared Thermographer Have?

Taken at face value, certification generally indicates one's level of formal training. This training, combined with experience and knowledge of the system or structure being inspected determine a thermographer's qualifications. The American Society for Nondestructive Testing document, SNT-TC-1A provides suggested criteria and experience under the Thermal/Infrared Test Method. Recommended curricula and classroom hours are listed below.

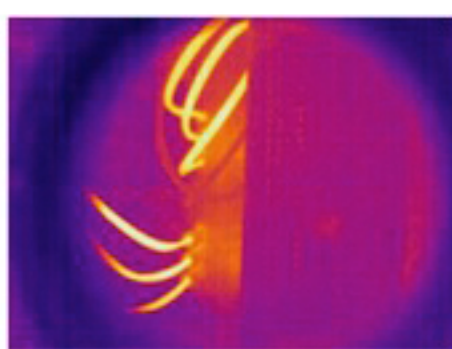
CERTIFICATION LEVEL	TRAINING HOURS	MONTHS EXPERIENCE
1	32	3
2	66	18
3	66	66

In short, it is up to you to determine your facility's needs and to verify that the Infrared Thermographer performing your survey meets those needs.

All Infrared Surveys performed by Jersey Infrared Consultants are conducted by Level III Infraspection Institute Certified Infrared Thermographers®, in accordance with current industry practices and published standards. Certifying our personnel to the highest level possible and providing regular continuing education underscores our commitment to providing our clients with the best service available.

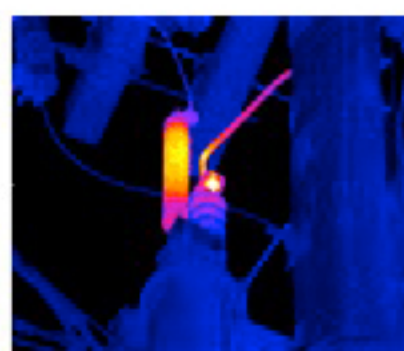
[More Information](#)

Frequency of Infrared Electrical Inspections



According to the 2010 Edition of NFPA 70B Recommended Practice for Electrical Equipment Maintenance, "Routine infrared inspections of energized electrical systems should be performed annually prior to shutdown. More frequent inspections, for example, quarterly or semiannually, should be performed where warranted by loss experience, installation of new electrical equipment, or changes in environmental, operational, or load conditions."

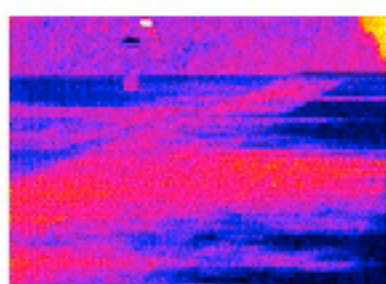
Semi-annual infrared inspections may also be prudent where unscheduled outages of electrical equipment could pose significant environmental or safety hazards, or result in catastrophic damage to other systems or components. Because infrared inspections are only effective when electrical system components are energized, it is imperative to perform infrared inspections when subject equipment is operational. For facilities with seasonal equipment such as heating and cooling systems, it may be necessary to schedule infrared inspections on several different days spread throughout the calendar year.



To receive a copy of our Guideline of Suggested Electrical Equipment or to discuss your facilities'

[More Information](#)

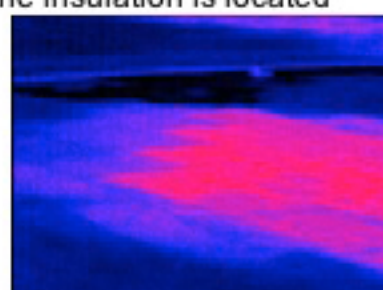
Spring is the Time for Infrared Roof Inspections



With onset of pleasant Spring days, the severity of Superstorm Sandy and the harshness of winter are fading memories. Left undetected, the damage caused by severe weather or dramatic swings in the weather can lead to premature roof failure. An infrared inspection of your roof can detect evidence of problems before they get out of hand.

Infrared inspections can detect evidence of latent moisture within the roofing system often before leaks become evident in the building.

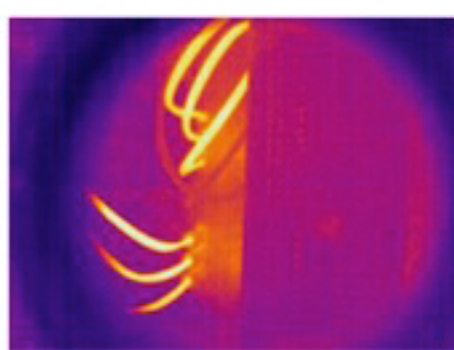
The best candidates for infrared inspection are flat or low slope roofs where the insulation is located between the roof deck and the membrane and is in direct contact with the underside of the membrane. Applicable constructions are roofs with either a smooth or gravel surface, built-up or single-ply membranes. For smooth-surfaced roofs, a short wave imager will provide more accurate results especially if the roof is painted with a reflective coating. All infrared data should be verified by performing an invasive core sample or moisture meter reading.



Provide us with the square footage and composition of your roof and we can provide you with a quotation for an Infrared Survey of your facility's roof.

[More Information](#)

Save Time & Money with IR Windows



In today's budget conscious environment, facility managers are forced to justify every expense in a facility maintenance budget, and often operate maintenance programs with less money than last year. Below are 3 ways IR Windows may help save your facility time and money:

1. Safety & Standards Compliance: The presence of IR Windows enables equipment to be in an enclosed, guarded condition, reducing potential electrical hazards during inspection. The non-intrusive inspection (keeping panel doors closed) does not elevate the risk of electrocution or of triggering an arc flash incident; therefore, elevated

levels of PPE may not be required when using an IR Window.

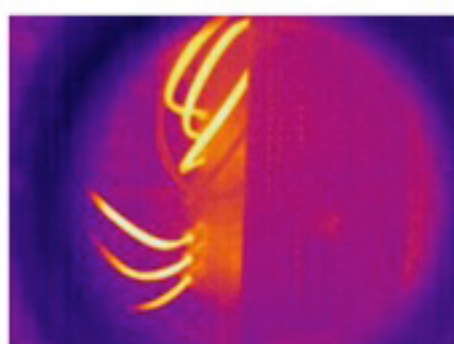
2. Risk Management: The Hierarchy of Control requires engineers and managers to eliminate risk where possible (as opposed to relying on engineering controls or PPE to protect personnel after the accident happens). Use of IR Windows eliminates the high-risk situations involved with open-panel inspection and replaces them with a non-intrusive work process.

3. Cost Savings/Efficiency: Time studies have shown that the installation of IR Windows can reduce the time required to inspect a piece of equipment by 90%. And ... time is money.

Provide us with the square footage and composition of your roof and we can provide you with a quotation for an Infrared Survey of your facility's roof.

[More Information](#)

Save Time & Money with IR Windows



In today's budget conscious environment, facility managers are forced to justify every expense in a facility maintenance budget, and often operate maintenance programs with less money than last year. Below are 3 ways IR Windows may help save your facility time and money:

1. Safety & Standards Compliance: The presence of IR Windows enables equipment to be in an enclosed, guarded condition, reducing potential electrical hazards during inspection. The non-intrusive inspection (keeping panel doors closed) does not elevate the risk of electrocution or of triggering an arc flash incident; therefore, elevated

levels of PPE may not be required when using an IR Window.

2. Risk Management: The Hierarchy of Control requires engineers and managers to eliminate risk where possible (as opposed to relying on engineering controls or PPE to protect personnel after the accident happens). Use of IR Windows eliminates the high-risk situations involved with open-panel inspection and replaces them with a non-intrusive work process.

3. Cost Savings/Efficiency: Time studies have shown that the installation of IR Windows can reduce the time required to inspect a piece of equipment by 90%. And ... time is money.

With your phone call to Jersey Infrared Consultants, your facility can start a program now that will save time & money for years to come.

[More Information](#)

Special Thank You Gift for our Readers

Place a new order during April for work to be completed by June 30, 2013, and receive a \$25 VISA gift card. This offer is available to our readers who mention the offer when placing their order. If you would prefer, Jersey Infrared Consultants will donate the value of your gift card to the National Autism Association in honor of Autism Awareness Month.

[Subscribe to our Newsletter](#)